



PORTFOLIO

DEBORAH MAYAUD

2017

CONTENTS

INTRODUCTION	p. 3
If I had to show you only one work...	p. 5
Projects	p. 21
Team competitions	p. 29
Personal artworks	p. 39
Travels	p. 45

INTRODUCTION

This portfolio tries to show my own skills and sensibility to the world.

However, it can't show the convictions driving me.

I feel concerned by humanitarian issues. I'm currently starting a master thesis with the main topic being post-disaster reconstruction and the role of urban architects and professionals.

Interested in your culture and the ability your people have to rebuild on sensitive soils, I wish to do an intership with you, in order to perfect myself and to deepen my researches.



IF I HAD TO SHOW YOU ONLY ONE WORK...



DIGGED ENTITY

This cultural center of 3,000 m² is a four-months school project. It hosts a multipurpose hall, a music school, a food court, a library, an archive, and a temporary exhibition gallery.

The project is integrated in the continuity of the urban layout. The concept used here is the “city showcase”. This notion stems from a thorough analysis and the advantage of the tramway line in front of our site. Indeed, on these same rails passes the Rhône Express, line connecting the Lyon-St Exupéry airport to Part-Dieu station.

This site could become the showcase of the city of Villeurbanne, allowing it to increase the attractiveness of the city.

The whole center turns its back on the city, becoming an icon, an urban landmark (notably thanks to its 27 meters high tower, the Pixel Tower). The interior of the island is a large hollowed courtyard, which allows the creation of a japanese patio, bringing a very mineral set, and revealing the composition of the urban layout. This reminder is also made in terms of materiality, with a rather mineral materiality on the outside, compared to a very vegetated interior.

The calcification of the bricks of Nineveh allows to create of the depth and a rhythm on the facade thanks to the sun, recall of the volcanic stones. The roof on the library is slightly detached, thanks to horizontal bays punctuated by modernist openings.

The very heart of the project was finally to offer to the inhabitants a space a little back, allowing an introspection.

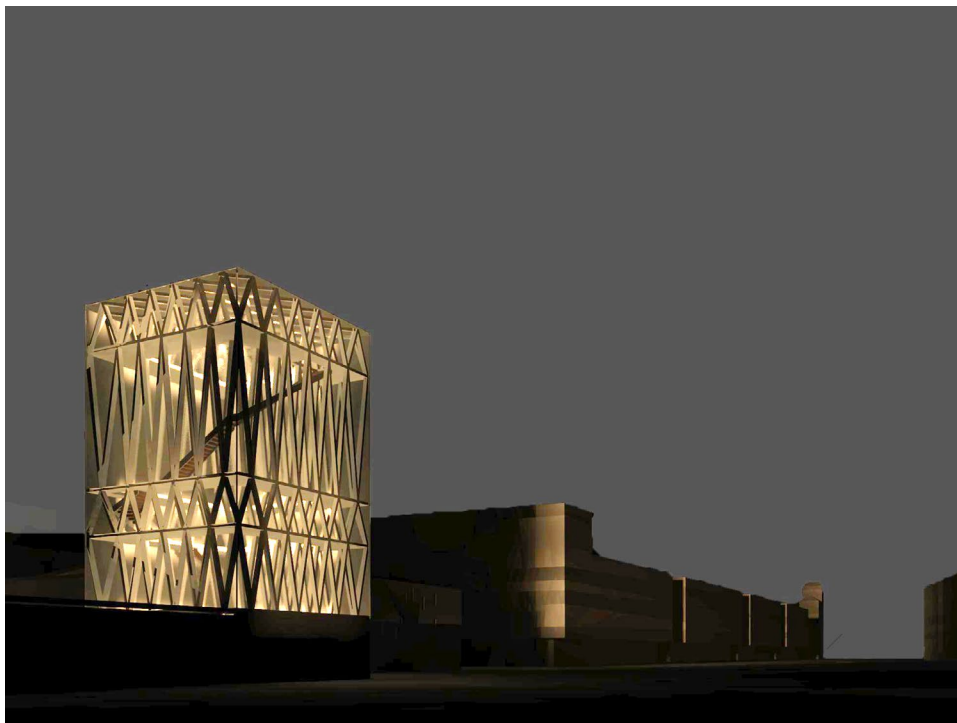


1. To show the urban layout by the organisation of the cultural center
1 : 2 000

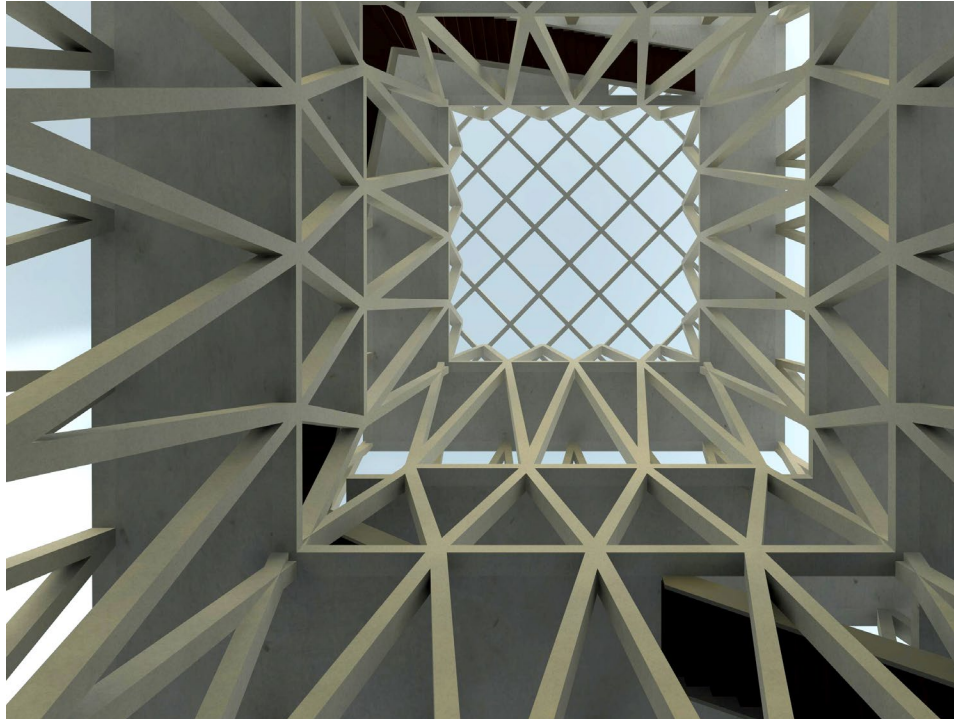


2. A cultural center organized around a precious garden inspired by japanese culture

1 : 200



3. The tower, a beacon at night in the neighbourhood.
Made with Revit Autodesk and Adobe Photoshop



4. The structure of the tower is inspired by trees
Made with Revit Autodesk



5. Scale model representing parts of the project with particular structures

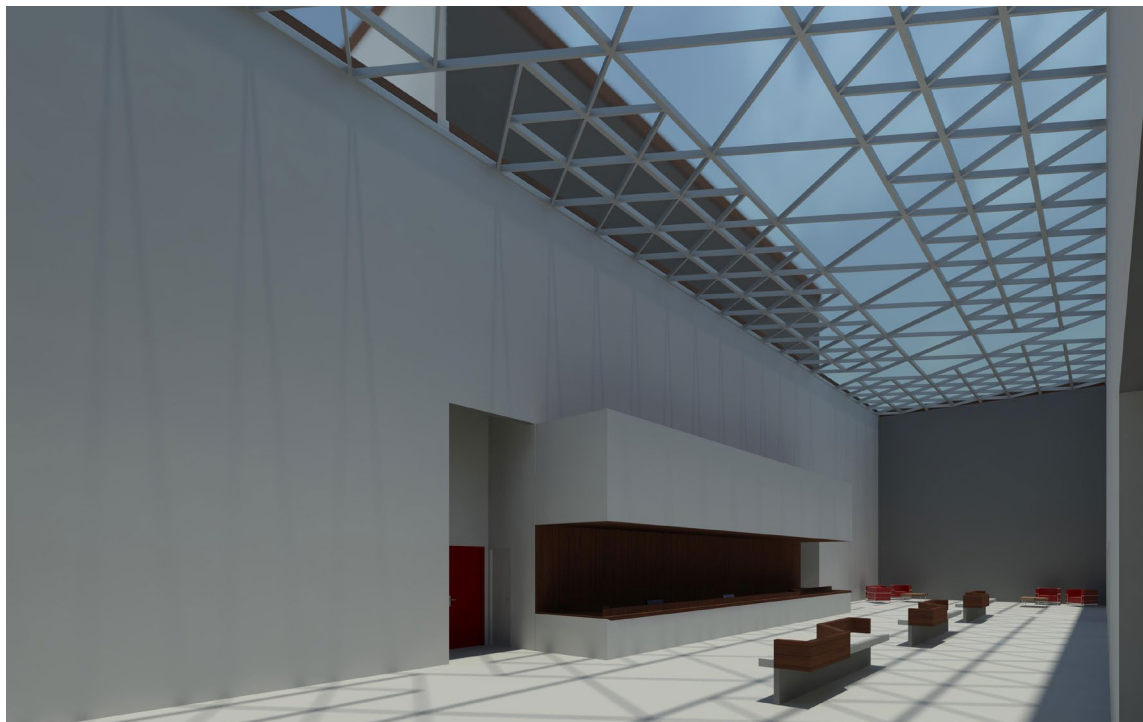
1 : 50



6. View on patio, the linked space of the project
1 : 50



7. The hall, space of meeting and information
1 : 50

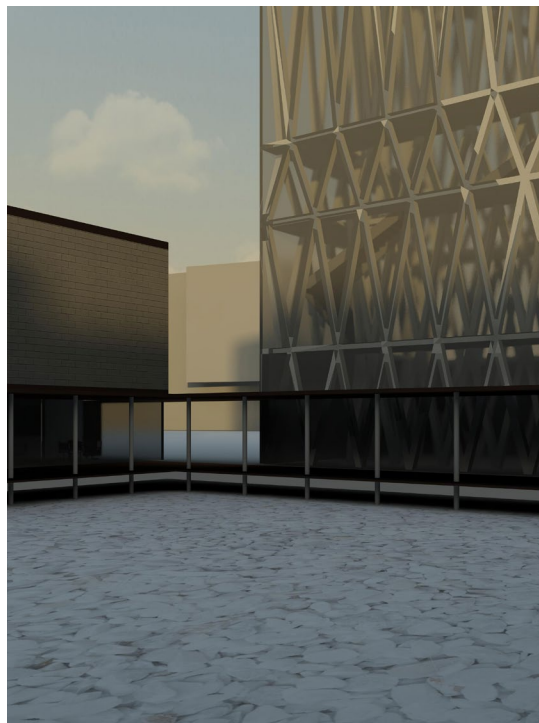


8. The roof's structure shows the entrance to the music school and the concert room

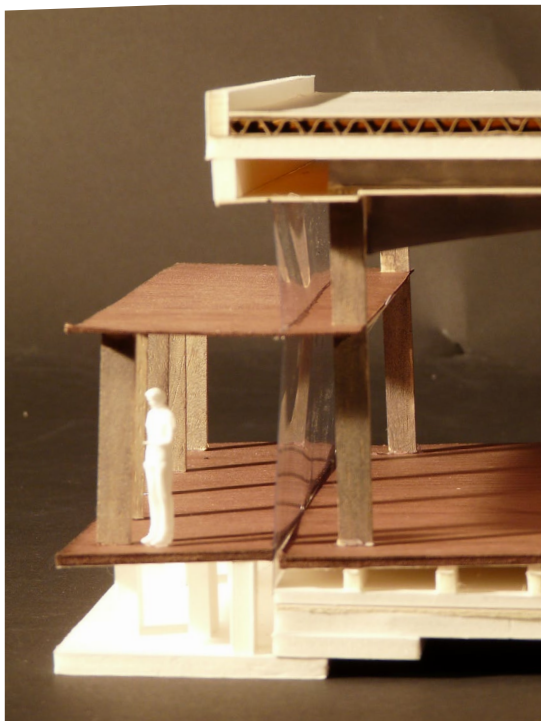
Made with Revit Autodesk



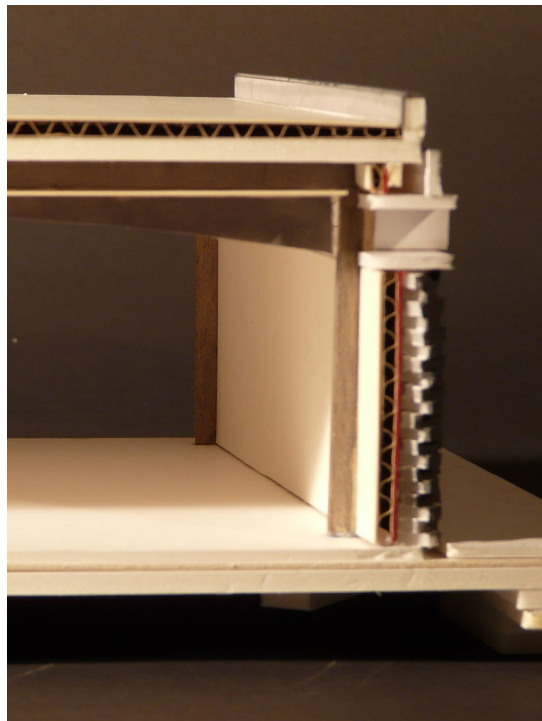
9. The bar is a place of meeting, opening on both the city and the patio.
Made with Revit Autodesk



10. The center, at dusk.
Made with Revit Autodesk



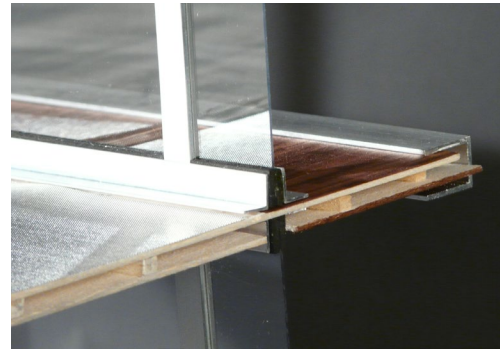
11. Facade on the patio
1 : 50



12. Facade on the street
1 : 50



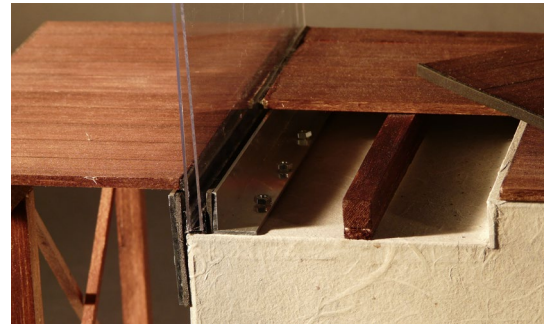
13. Scale model of the patio's facade
1 : 10



14. et 15. Details of the scale model
1 : 10



16. Linked between the patio's platform and the bay window
1 : 5



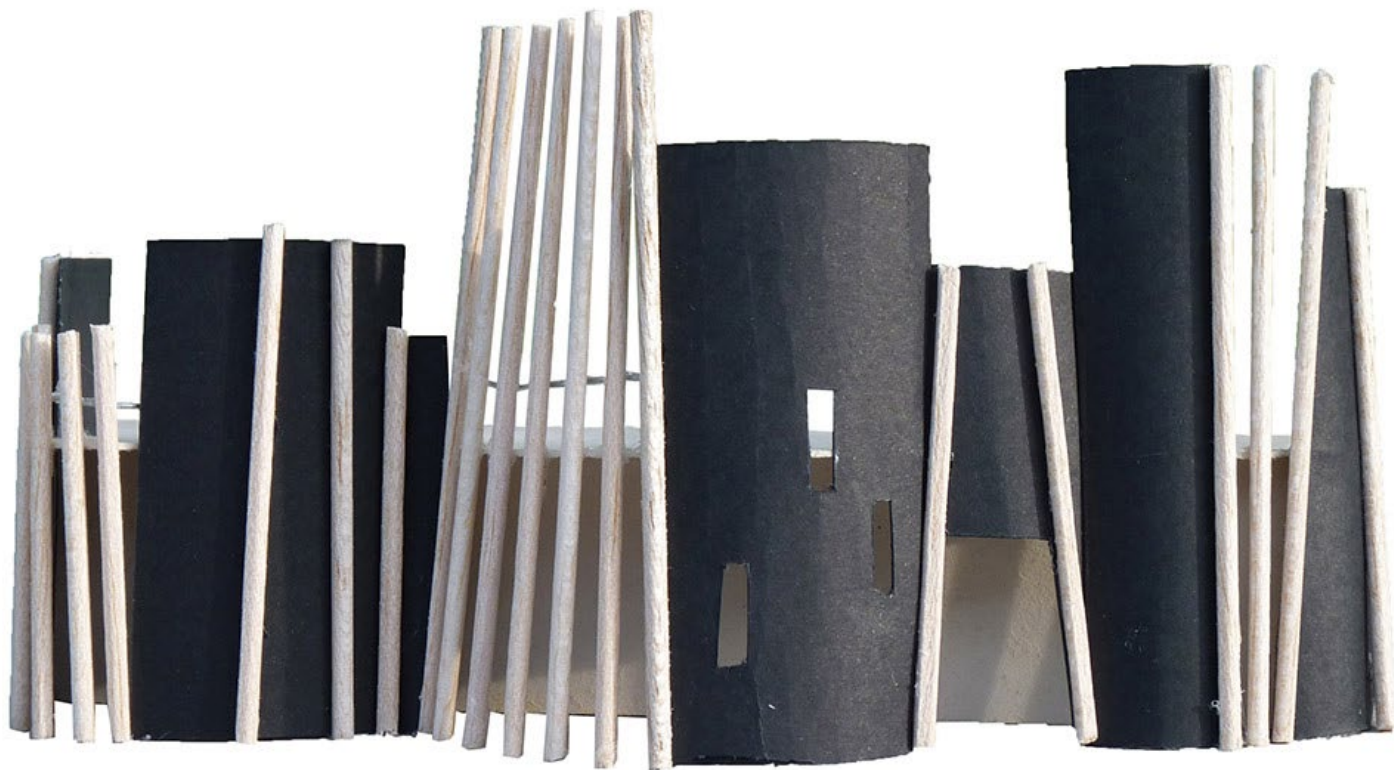
17. et 18. Details of the scale model
1 : 5



19. to 22. Prototype of framework
1:1



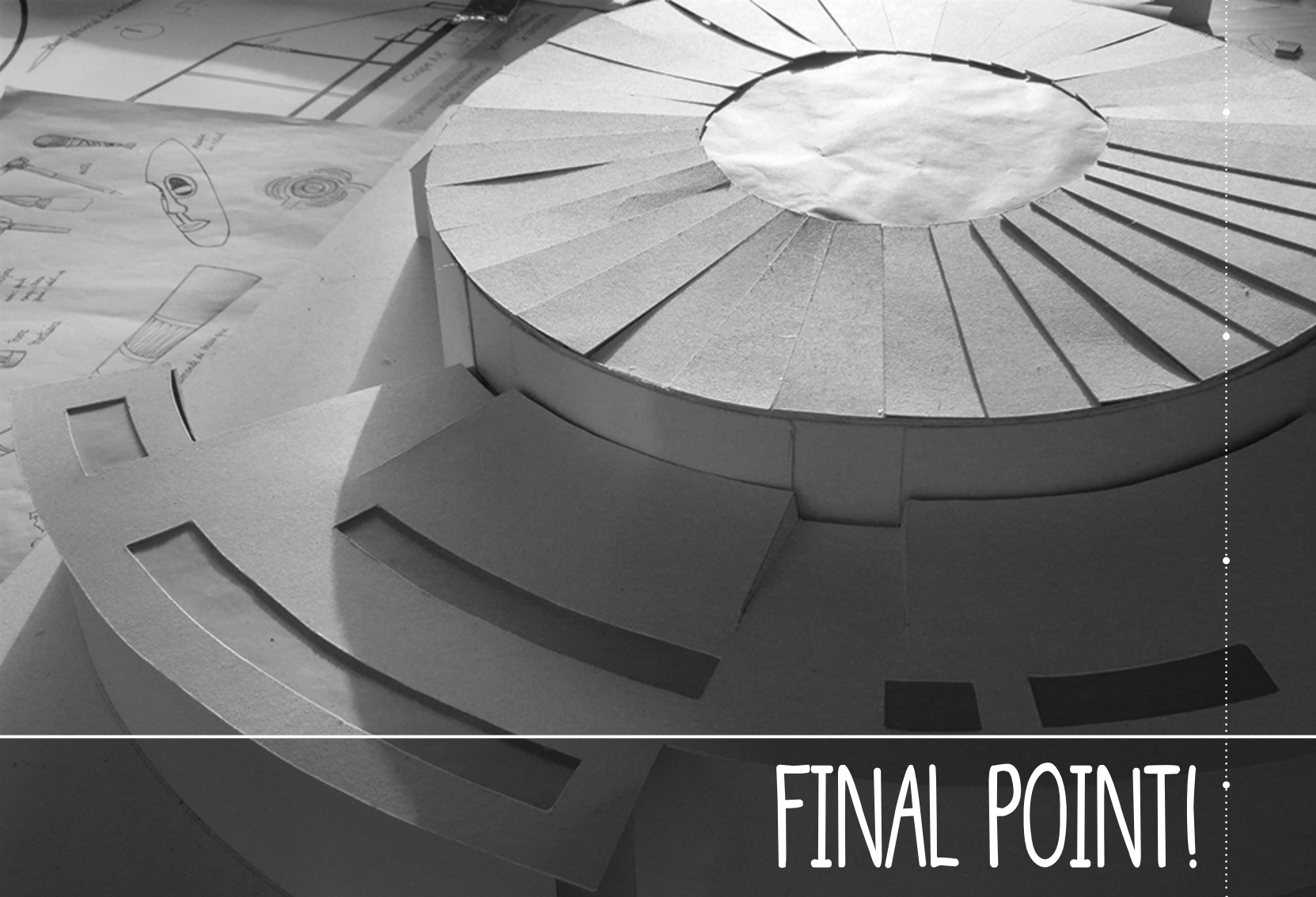
PROJECTS



SKYLINE

For this project, we could create a tourist office for the edge of the Rhône. First subject that is carrying the importance of the architecture in the city, this building could be a plus for the city of Lyon, in a full urban context.

I decided to work on the link between the civilisations and the water. Because water is the most important commodity, I thought that it could be interesting to work around the relation that we have with it. Civilisations have searched to be near water (Venice, New York City, Lyon). And it's near water that we have the biggest cities, with its vertical skylines. I used it to imagine my building. My tourist office has two floors, one which can be closed, on the edge, and the second only opened, in the curb. The space which could be closed at night is where we could find informations. The opened space, which shows some beautiful views of Lyon, could be an exhibition about Lyon and its rivers, or about the relation between humans and water.



FINAL POINT!

To this working, we have chosen an ethnic group, and did a museum for them. The main problem was a row of posts, spaced by five meters between each. The choice of the shape was free, and this building was an extension, on a rooftop.

I chose to work on the aboriginal art, because their way of drawing stayed in my mind. They only draw with a lot of points to describe their environnement. Because the drawings were what I reminded, my museum is a circle, and the extensions of the circle are spaces of exhibition and a room of conference.

The main space is dedicated for the drawing art. It's a space of peace, where some sofas are placed.



STRESSLESS

During my internship of first practice in agency, which I did between the second and the third years of licence degree, I had the luck to draw a swimmingpool, alone. My presence in this country only lasted one month, but I kept contact with the team, to follow the building.

This pool had to have two kinds of space : one for children, and one to swim, deeper than the first one. The leveling (inside and outside of the pool) is in relation with the leveling of the site, very important here. The overflow of the pool is on the sloping side, creating a visual break. It seems floating. This overflow is related to the landscape, and the sea, seeing at the horizon, before a deep forest.

This projet is near the fence, unesthetic. It draws an end to the the field, more beautiful than fences.



TEAM COMPETITIONS



SOLAR DECATHLON 2012, VERSAILLES, FRANCE

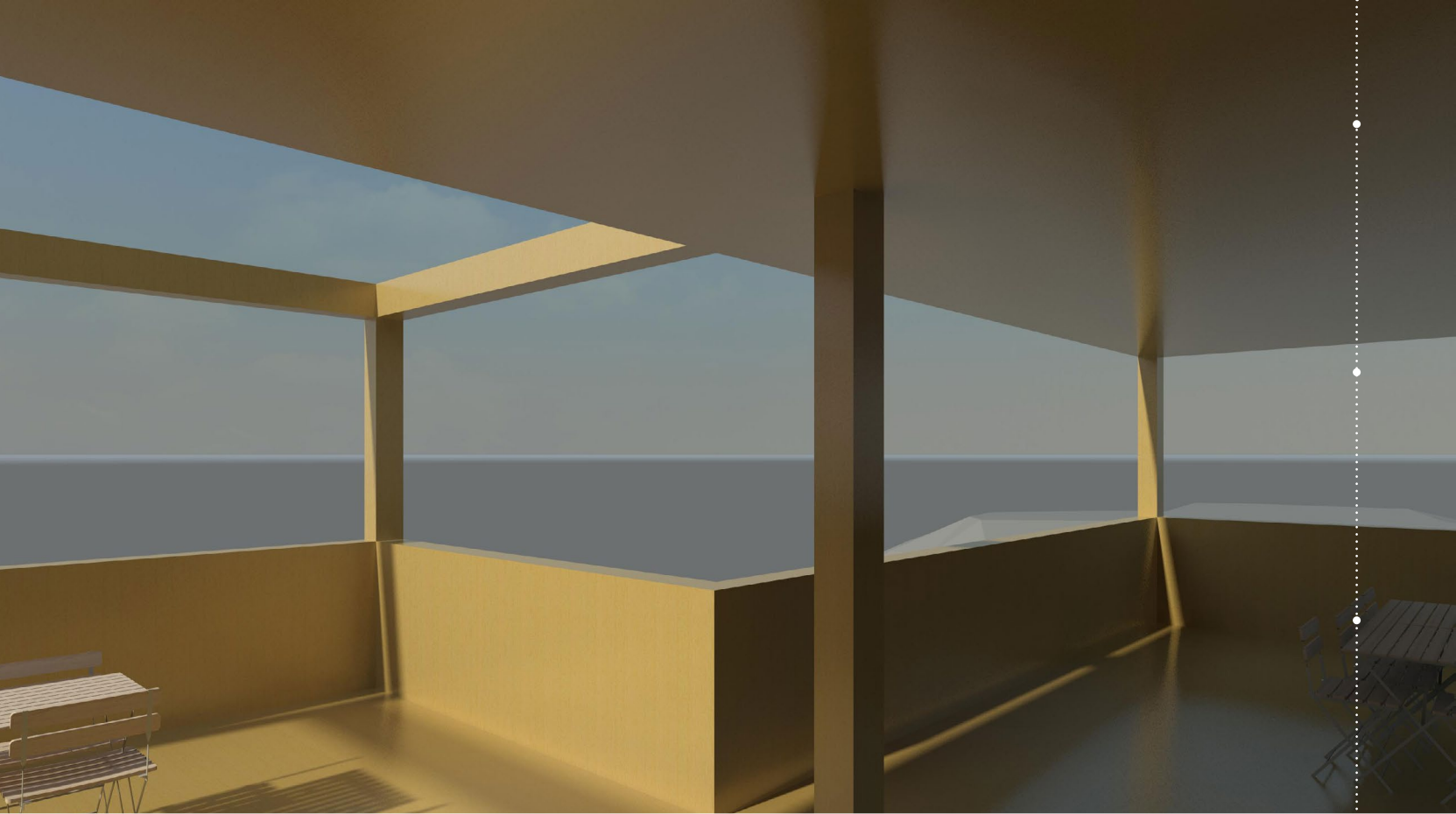
PAVILLON TRA

IN COLLABORATION WITH STUDENTS OF ENSAG

In association with the ENSAGrenoble (college of architecture), I have worked to the conception and the realisation of the exhibition pavilion of the TRA (Team Rhône-Alpes). Our pavilion presented french schools of architecture, and the project Cassiopéa, winner of the Solar Decathlon's edition 2012.

The Solar Decathlon is an international competition, for positive building. We have created the pavilion for the Solar Decathlon Europe.

Due to the experience, we have chosen to create a team, and we expect to participate in 2019.



FESTIVAL DES CABANES, FAVERGES-SEYNETHÈX, FRANCE

POINT OF VIEW

IN COLLABORATION WITH LAMIA SOLH-KABRA

The resort of Sambuy is exceptional. Culminating at more than 2,000 meters of altitude, the rough climb is rewarded by a fantastic panorama. This is the highlight of this site. Overlooking the valley and giving to see idyllic landscapes, the Little Sambuy is a place whose exceptional panorama gives matter to dream about.

We wanted, for this site, to have a minimal impact on the ground, as well as framing views. We wanted our building not to be an imposing architecture, but an architecture that is at the service of walkers. These two visions of the project are our starting concept.

The hut is here only a nucleus, which comes to hold the terraces, allowing to frame and to direct the points of view. It is also a space for stokage, for various tables and chairs, offering the opportunity to picnic in a breathtaking environment. The idea here is to highlight the landscapes and the heritage of the commune of Faverges.



IN COLLABORATION WITH MANON GRIZARD AND LOUIS VIALLET

**WORK
IN
PROGRESS**

FÊTE DES LUMIÈRES, LYON, FRANCE

METAMORPHOSIS





PERSONAL ARTWORKS



SCULPTURES

C'était surtout
l'appartement.

J'aime les
choses qui
ont une âme.

COMICS



PHOTOGRAPHY







TRAVELS



MY ROOTS

SOUTH OF FRANCE



MEET PEOPLE AND WORK WITH **REPUBLICA DOMINICANA**



URBAN LAYOUT & LA SAGRADA FAMILIA

BARCELONA



ROMA, POMPEI, VENEZIA, MILANO ITALY

CONTACT ME!

MAIL : DEBORAH.MAYAUD@LYON.ARCHI.FR

PHONE : (+33) 6.99.73.77.14

WEB SITE : [HTTP://DEBOMAYAUD.WIXSITE.COM/MONSITE](http://DEBOMAYAUD.WIXSITE.COM/MONSITE)

PORTFOLIO

DEBORAH MAYAUD

2017